



Cyrusbioscience

Flag-Tag Antibody (Mouse)

Catalog Number: TAB0004

Amount: 100µg/100µl

Clone Number: 2C5

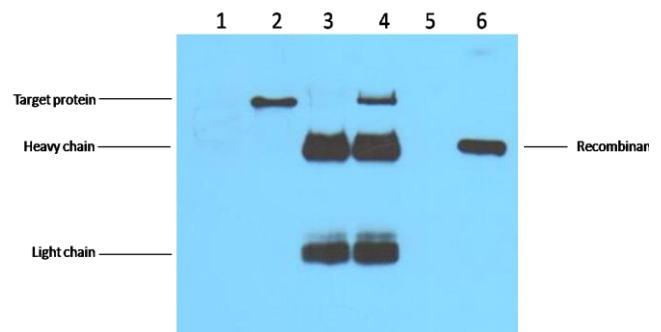
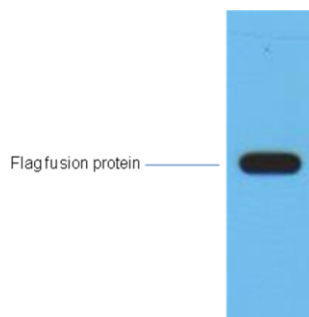
Background: The DYKDDDDK peptide (Flag-tag) is a small component of an epitope which does not appear to interfere with the bioactivity or the biodistribution of the recombinant protein. It has been used extensively as a general epitope tag in expression vectors. It can be used for affinity chromatography, then used to separate recombinant, overexpressed protein from wild-type protein expressed by the host organism. It can also be used in the isolation of protein complexes with multiple subunits. A Flag-tag can be used in many different assays that require recognition by an antibody. If there is no antibody against the studied protein, adding a Flag-tag to this protein allows one to follow the protein with an antibody against the Flag sequence.

Form of Antibody: Mouse IgG1 in phosphate buffered saline (without Mg²⁺ and Ca²⁺), pH 7.4, 150mM NaCl, 0.02% sodium azide and 50% glycerol.

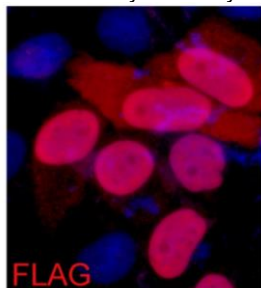
Storage/Stability: Store at -20°C/1 year

Specificity/Sensitivity: The Flag tag antibody can recognize C-terminal, internal, and N-terminal Flag-tag fusion proteins.

Applications: WB: 1:5,000 ; IF: 1:2,000 ; IP: 1:5,000



1µg Flag fusion protein+ Primary antibody dilution at 1:10,000.



IF analysis of 293 cells transfected with a Flag-tag protein, using anti-FlagTag Mouse mAb at a 1:2000 dilution (blue DAPI, red anti-Flag).

IP antibody use : 5µg Flag Mouse IgG1 per ml Lysate · WB 1:5000

- 1、untransfected 293 cell lysate
- 2、transfected 293 cell lysate with Flag-tag fusion protein
- 3、IP (transfected 293+ normal Mouse IgG+Protein G agarose)
- 4、IP (transfected 293+anti- Flag mAb+ Protein G agarose)
- 5、IP (transfected 293+Protein G)
- 6、Recombinant protein (E.coli).



Cyrusbioscience

塞魯士生技有限公司

Cyrusbioscience, Inc.

www.cyrusbio.com.tw

Tel:+886(2)22988180

Fax:+886(2)22989891

e-mail: sales@cyrusbioscience.com