



Cyrusbioscience

GAPDH Control Antibody(Rabbit)

Catalog Number: CAB0006

Amount: 100µg/100µl

Background: Glyceraldehyde 3 phosphate dehydrogenase (GAPDH) is well known as one of the key enzymes involved in glycolysis. GAPDH is constitutively expressed in almost all tissues at high level, therefore antibodies against GAPDH are useful as loading controls for Western Blotting. Some physiological factors, such as hypoxia and diabetes, increase GAPDH expression in certain cell types.

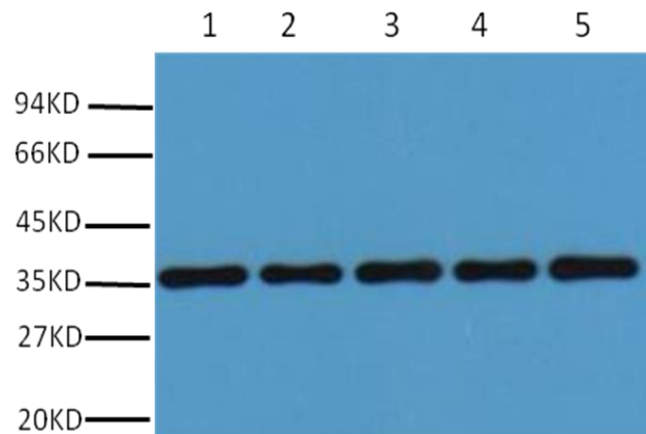
Form of Antibody: Rabbit IgG in phosphate buffered saline , pH 7.4, 150mM NaCl, 0.02% sodium azide and 50% glycerol. Store at -20 °C. Stable for 12 months from date of receipt.

Storage/Stability: Store at -20°C/1 year

Purification: The antibody was affinity-purified from rabbit antiserum by affinity-chromatography using epitope-specific peptide.

Specificity/Sensitivity: Antibody can detect endogenous GAPDH protein.

Applications: WB: 1:2,000-1:5,000 ; IHC: 1:200



Western blot analysis of 293T (lane 1), Rat brain (lane 2), NIH 3T3 (lane 3), Sheep Muscle (lane 4), Rabbit testis (lane 5) with GAPDH rabbit polyclonal diluted at 1:20,000.