



Cyrusbioscience

GAPDH Control Antibody(Mouse)

Catalog Number: CAB0004

Amount: 100µg/100µl

Clone Number: 1B10

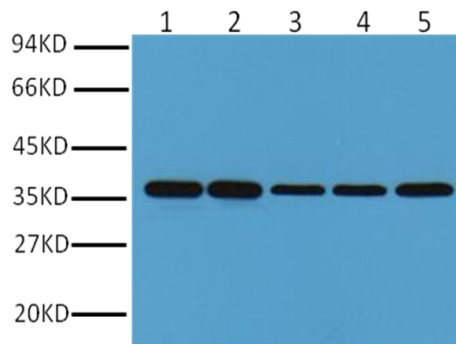
Background: Glyceraldehyde 3 phosphate dehydrogenase (GAPDH) is well known as one of the key enzymes involved in glycolysis. GAPDH is constitutively expressed in almost all tissues at high levels, therefore antibodies against GAPDH are useful as loading controls for Western Blotting. Some physiological factors, such as hypoxia and diabetes, increase GAPDH expression in certain cell types.

Form of Antibody: Mouse IgG1 in phosphate buffered saline (without Mg²⁺ and Ca²⁺), pH 7.4, 150mM NaCl, 0.02% sodium azide and 50% glycerol.

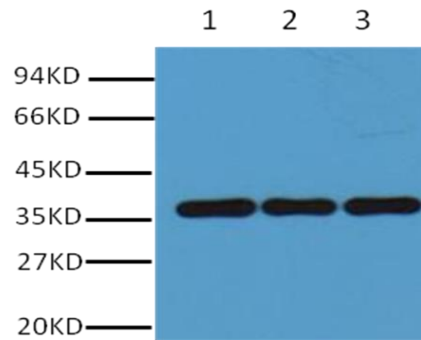
Storage/Stability: Store at -20°C/1 year

Specificity/Sensitivity: Antibody can detect endogenous GAPDH protein.

Applications: WB: 1:2,000-1:5,000 ; IHC: 1:200



Western blot analysis of HeLa (lane 1), Rat brain (lane 2), Rabbit Muscle (lane 3), Sheep Muscle (lane 4), and Mouse brain (lane 5) with GAPDH mouse mAb diluted at 1:10,000.



Western blot analysis of Chicken Muscle (lane 1), Hamster Lung (lane 2), Pig Heart (lane 3), with GAPDH mouse mAb diluted at 1:10,000.