



Cyrusbioscience

## $\beta$ -actin Control Antibody(Mouse)

**Catalog Number:** CAB0002

**Amount:** 100 $\mu$ g/100 $\mu$ l

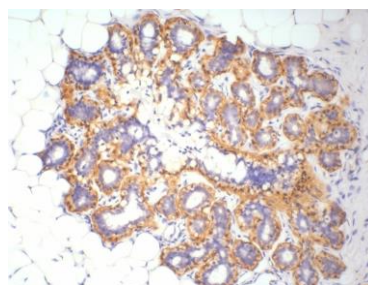
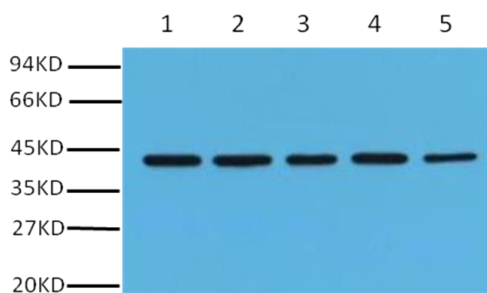
**Background:**  $\beta$ -Actin is one of six different actin isoforms that have been identified. The actin molecules found in cells of various species and tissues tend to be very similar in their immunological and physical properties. Therefore, Antibodies against  $\beta$ -Actin are useful as loading controls for Western Blotting. However it should be noted that levels of  $\beta$ -Actin may not be stable in certain cells. For example, expression of  $\beta$ -Actin in adipose tissue is very low and therefore  $\beta$ -Actin should not be used as loading control for these tissues.

**Form of Antibody:** Mouse IgG1 in phosphate buffered saline (without Mg<sup>2+</sup> and Ca<sup>2+</sup>), pH 7.4, 150mM NaCl, 0.02% sodium azide and 50% glycerol.

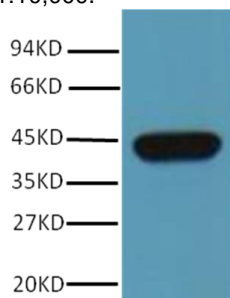
**Storage/Stability:** Store at -20°C/1 year

**Specificity/Sensitivity:** Antibody can detect endogenous  $\beta$ -actin protein.

**Applications:** WB: 1:2,000-1:5,000 ; IHC: 1:200 ; IF: 1:200

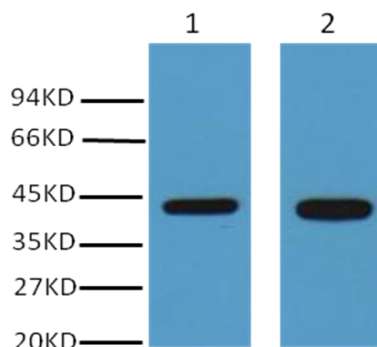


Western blot analysis of Hela (lane 1) , Rat brain (lane 2) , Mouse brain (lane 3) , Chicken lung (lane 4) and Rabbit testis (lane 5) with  $\beta$ -Actin mouse mAb (5B7) diluted at 1:10,000.



Western blot analysis of Hamster Kidney with  $\beta$ -Actin mouse mAb (5B7) diluted at 1:10,000.

IHC Staining of Human ovary tissue with  $\beta$ -Actin mouse mAb (5B7) diluted at 1:200.



Western blot analysis of 293T (lane 1) , NIH3T3 (lane 2) , with  $\beta$ -Actin mouse mAb(5B7) diluted at 1:10,000.