



Cyrusbioscience

Product datasheet

DNA Ladder Marker, 1kbp, 1-10kb (unstained)

Cat. Number: 2011

Description:

This ladder consists of 10 blunt ended DNA bands at exactly 1, 2, 3, 4, 5, 6, 7, 8, 9 and 10 kilobase.

Storage:

Storage buffer: 10 mM Tris-HCl, 1 mM EDTA, (pH 8.0).

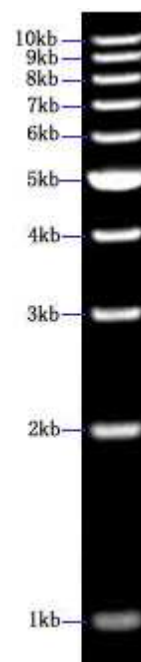
Stored at 4°C for a few weeks. For long term storage, store at -20°C.

Range: 1kb to 10kb

Package: 50ul/vial and 450ul loading buffer

Recommended load: 5-10u/Loading. All bands can be resolved using 0.6% - 1.0% agarose gel electrophoresis.

Concentration: 90ng/ul for 5kb; 30ng/ul for other bands.



Tips for Achieving the Best Results

(1) Make a ready-to-use working solution of the ladder as follows:

Add 50ul ladder stock solution to 450ul ready-to-use loading buffer (containing 50ul 10X loading dye and 400ul TE buffer). Vortex to mix well.

(2) For best resolution of 5-10 kb fragment, use 0.6% agarose. For best resolution of 1-5 kb fragment, use 1.0% agarose. For general use, use 0.8% - 0.9% agarose.

(3) To pinpoint the location of a sample band relative to the ladder, try the following technique. Run three lanes in parallel: sample only, sample + ladder, ladder only. This technique is especially useful for bands above 6 kb.